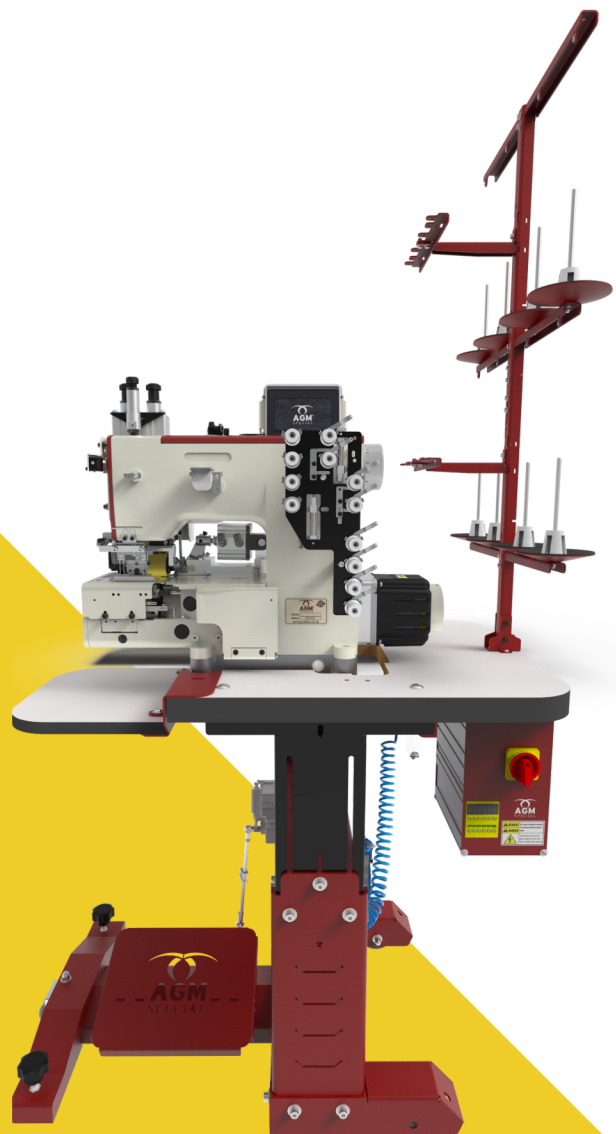
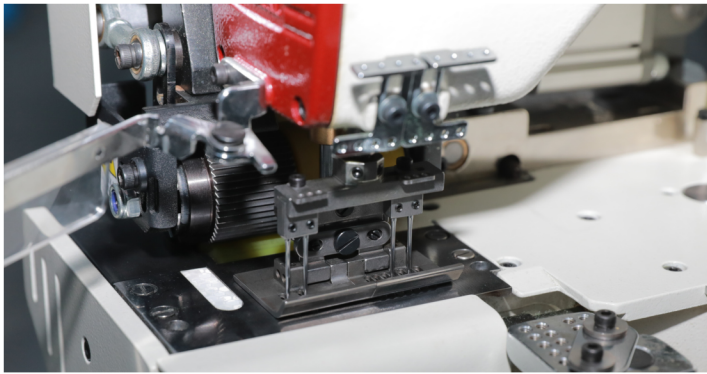


KM 930 SDX-T3

Waistband Attaching/Sewing Automat For Jeans





AGM Special KM 930 SDX-T3 model automatic without feed dog waistband attaching machine designed for jeans trousers, chino type casual trousers , jeans jackets and work wear manufacturers.

WITHOUT FEED DOG

Without feed dog, superior stitch quality on all kinds of fabrics thanks to the lower and upper strong roller group.

NO NEED TO CHANGE GAUGE SET

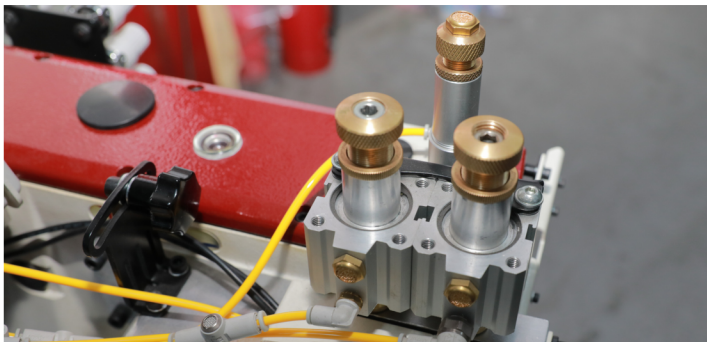
Adjustable gauge set from 1" to 2".

PROGRAMMABLE SKIP STITCH OPTIONS

The skip stitch can be adjusted seperately(left-right) according to waistband design.

DOUBLE ROLLER SYSTEM WITH SHOCK ABSORBER

Improved for different fabric thickness double roller system with shock absorber.



Technical Features



Special design without feed dog.

Possibility to adjust from 1" to 2" with existing gauge set without gauge set changing

Needle feed 6 needle chain stitch sewing machine head specially designed for AGM Special.

Software fully developed by AGM Special.

Left and right independently adjustable skip stitch feature.

Additional pulling roller device behind the blade.

Automatic cutting device on enter and exit.

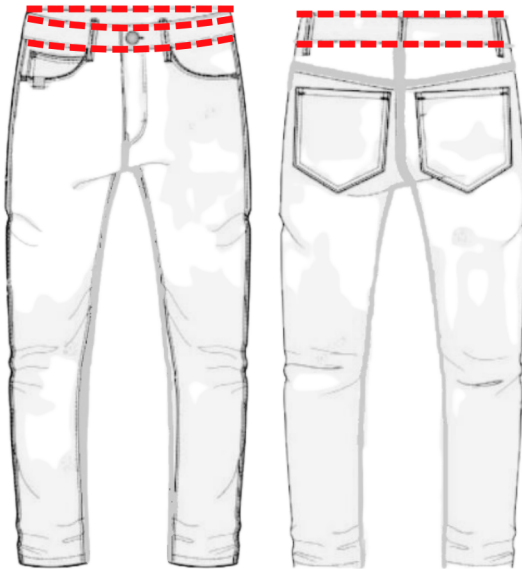
Special design guided presser foot.

Upper and lower rubber roller for curved and flat form waistbands.

Automatic double tension mechanism that prevents sharp chain stitch effects.

Easy to use touch screen with Turkish and English languages option.

Oil tank drain mechanism for an easy oil change.



Gauge Set Options

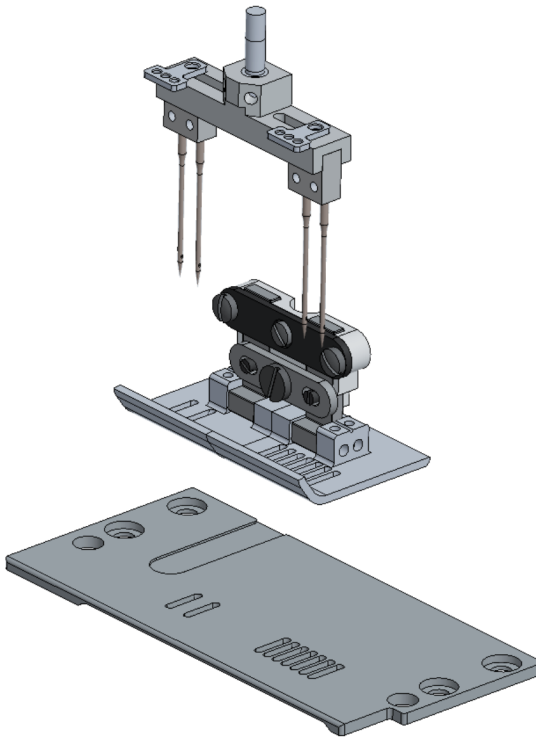
Standard Gauge Set : Minimum 1" , maximum 2" special gauge set

Optional Gauge Sets

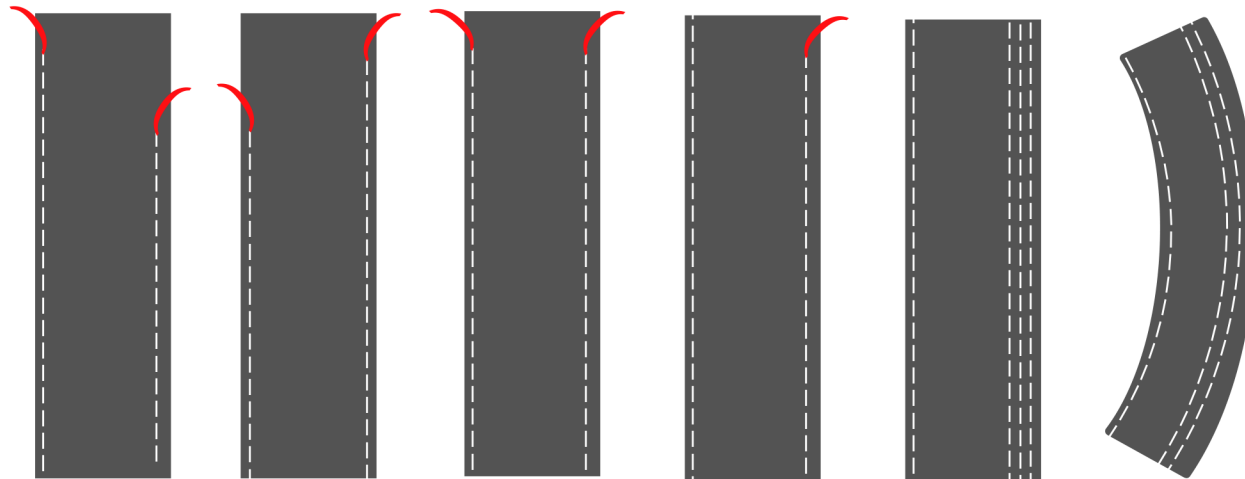
Needle Distance : 1/4 "

Needle No : Minimum 1 , Maximum 4

Gauge Set Size : Minimum 1 " , Maximum 2 "



Skip Stitch Options



Machine Head :	Needle feed 6 needle chain stitch
Motor :	Direct drive servo electronic motor
Table and Stand :	Adjustable L type
Skip Stitch :	Stand-alone adjustable left and right stitch skipping
Cutting :	Automatic cutting device on enter and exit
Foot Lifter :	Automatic
Extra Pulling :	Additional pulling roller device behind the blade
Needle Cooling :	Extra strong needle cooling
Presser Foot :	Guided pressure foot
Roller Device :	Upper and lower rubber roller
Puller Adjustment :	Easy to change puller adjustment system
Oil Tank Drain :	Oil tank drain mechanism for an easy oil change.
Roller Air Pressure :	Extra air pressure system on roller.

Tension Mechanism:	That prevents sharp chain stitch effects
Touch Screen :	Turkish and English languages option
Blade Cutting Range :	55 mm
Maximum Speed :	3200 rpm
Daily Capacity :	1700-2500 pcs/8 hours
Net Weight :	98 kg
Gross Weight :	111 kg
Dimensions	60x100x130 cm
Air Pressure :	6 bar
Voltage :	220-240v 60Hz
Power :	2400-2800w





www.agmspecial.com

AGM Special Mak. San. Ve Dış Tic. A.Ş
Birlik Mh., Karaoğlanoğlu Cd. 7/A, 34230
Esenler/İstanbul Türkiye

Asil Grup Mak. San. Ve Dış Tic. Ltd. Şti.
İkitelli O.S.B. Süleyman Demirel Bulv. İş Modern San. Sit. G:11-12
Başakşehir/İstanbul Türkiye

